

## ENHANCING CAMPUS SECURITY AND MONITORING WITH CLOSED-CIRCUIT TELEVISION (CCTV) FACILITIES

The implementation and effective utilization of Closed-Circuit Television (CCTV) facilities play a vital role in ensuring the safety and security of a college campus. In line with the National Assessment and Accreditation Council (NAAC) guidelines, this report assesses the installation, usage, and monitoring of CCTV facilities in our college, highlighting their importance in maintaining a safe and conducive learning environment.

**Installation of CCTV Facilities:** The College has made significant investments in the installation of 193 CCTV cameras across the campus. These cameras have been strategically placed to cover critical areas such as entrances, parking lots, classrooms, laboratories, libraries, common areas, and other sensitive locations. This comprehensive coverage ensures that no potential security threat goes unnoticed.

**Usage of CCTV Facilities:** The CCTV facilities have been integrated into our college's security and monitoring system, serving multiple purposes:

- 1. Crime Deterrence:** The presence of CCTV cameras acts as a deterrent to potential wrongdoers, reducing the likelihood of crimes such as theft, vandalism, and trespassing.
- 2. Safety:** CCTV cameras are used to monitor high-traffic areas, ensuring the safety of students, faculty, and staff. In case of accidents or emergencies, the footage can be invaluable for reviewing and improving safety protocols.
- 3. Disciplinary Actions:** CCTV footage is used to investigate incidents of misconduct, vandalism, or other rule violations. This aids in taking appropriate disciplinary actions and maintaining a disciplined academic environment.
- 4. Visitor Monitoring:** Visitors to the campus are recorded, helping to keep track of who enters and exits the premises. This is essential for ensuring the safety of students and staff.
- 5. Infrastructure Protection:** CCTV cameras are essential in safeguarding college infrastructure and assets. They prevent unauthorized access to sensitive areas and monitor equipment and facilities.

**Monitoring and Data Management:** The College has established a dedicated monitoring center equipped with trained personnel who oversee the live feed from CCTV cameras 24/7. The following practices are in place.

1. **Regular Monitoring:** Trained security personnel continuously monitor live feeds, enabling them to respond quickly to any suspicious activity or emergencies.
2. **Recording and Storage:** CCTV footage is recorded and stored securely for a defined period, in compliance with data protection regulations. This footage is accessible for review as needed.
3. **Access Control:** Access to CCTV footage is restricted to authorized personnel only, ensuring the privacy and security of individuals captured on camera.

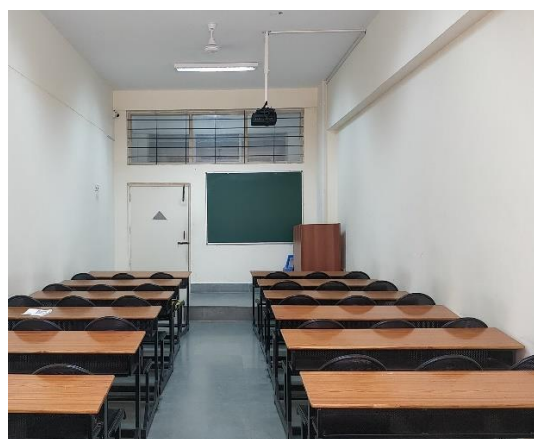
**Benefits of CCTV Facilities:** The implementation of CCTV facilities in our college has yielded numerous benefits:

1. **Enhanced Security:** Incidents of theft, vandalism, and unauthorized entry have significantly reduced, creating a safer campus environment.
2. **Deterrence:** The presence of CCTV cameras discourages potential wrongdoers from engaging in criminal activities.
3. **Quick Response:** Prompt response to emergencies and incidents is possible due to real-time monitoring.
4. **Accountability:** CCTV footage provides an objective record of events, aiding in investigations and decision-making.
5. **Data for Continuous Improvement:** Analyzing CCTV footage helps identify areas that require security or safety enhancements, contributing to a culture of continuous improvement.

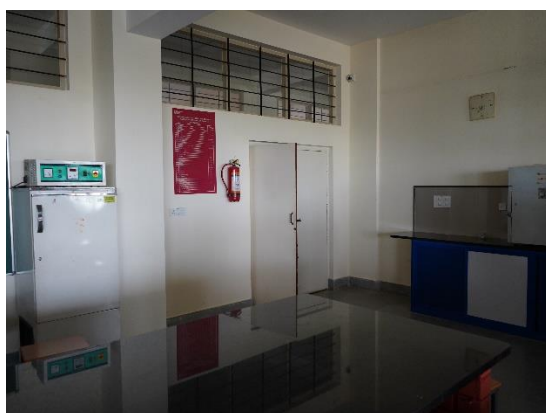
In compliance with NAAC guidelines, our college has successfully implemented CCTV facilities, which have proven to be an invaluable asset in ensuring campus safety and security. These facilities are not only a deterrent to criminal activity but also aid in investigations and incident management. The comprehensive monitoring and responsible data management practices underscore our commitment to maintaining a secure and conducive learning environment for all stakeholders.



**CCTV IN CORRIDOR**



**CCTV IN CLASSROOM**



**CCTV IN LAB**

*Vatkalath*

*Principal,  
M.S. Ramaiah College of Arts, Science & Commerce  
MSRIT Post, MSR Nagar  
Bangalore - 560 054*



**RAMAIAH**  
College of Arts, Science &  
Commerce

ಎಮ್ ಎಸ್ ರಾಮಯ್ಯ ಕಲಾ, ವಿಜ್ಞಾನ ಮತ್ತು ವಾಣಿಜ್ಯ ಕಾಲೇಜು

**M S Ramaiah College of Arts, Science and Commerce**

Re-accredited 'A' by NAAC, Permanently Affiliated to Bengaluru City University,  
Approved by Government of Karnataka, Approved by AICTE, New Delhi,  
Recognized by UGC under 2f & 12B of UGC act 1956



(National Institutional Ranking Framework, Ministry of Education, Govt of India)  
Ranked 55<sup>th</sup> in NIRF India Ranking by MHRD, New Delhi  
DBT Star College Scheme

## ENSURING QUALITY HOSTEL FACILITIES FOR BOYS AND GIRLS

Hostel facilities are an integral part of providing a conducive and holistic learning environment for students. As per the National Assessment and Accreditation Council (NAAC) guidelines, this report evaluates the state of hostel facilities for both boys and girls at Ramaiah College for Arts, Science, and Commerce, emphasizing our commitment to providing safe, comfortable, and inclusive living spaces for our students.

**Hostel Infrastructure:** Ramaiah College for Arts, Science, and Commerce boasts modern and well-maintained hostel facilities for both boys and girls. The hostels have been designed to cater to the diverse needs of our students, ensuring a comfortable and secure living environment.

### Accommodation Capacity:

1. Boys' Hostel: The boys' hostel can accommodate up to 100 students.
2. Girls' Hostel: The girls' hostel can accommodate up to 100 students.

**Amenities and Services:** Our hostels are equipped with a range of amenities and services to enhance the quality of life for resident students:

1. **Rooms:** Spacious and well-ventilated rooms with comfortable furnishings.
2. **Common Areas:** Common areas for socializing, study, and recreation.
3. **Hygiene and Sanitation:** Regular cleaning and maintenance to ensure a hygienic environment.
4. **Dining Facilities:** Nutritious and hygienic food services in the hostel mess.
5. **Security:** 24/7 security personnel and surveillance cameras for safety.
6. **Wi-Fi:** High-speed internet connectivity for academic purposes.
7. **Laundry:** Facilities for students to do their laundry.
8. **Medical Facilities:** Access to basic medical facilities and a tie-up with nearby hospitals for emergencies.

**Safety and Security:** The safety and security of our hostel residents are of paramount importance. Our safety measures include:

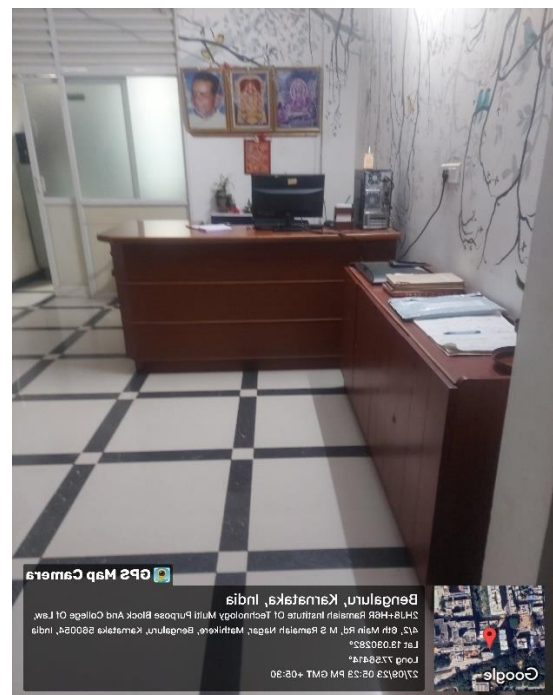
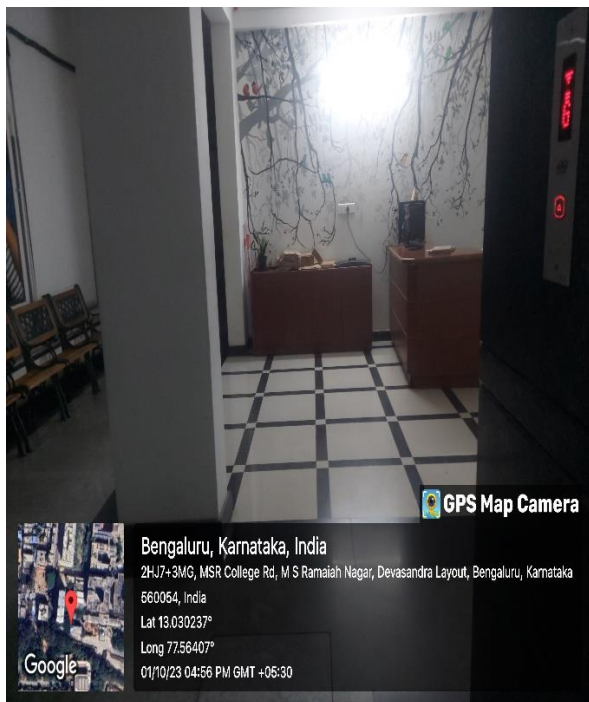
1. **Security Personnel:** Trained security personnel stationed round-the-clock.
2. **CCTV Surveillance:** Surveillance cameras in key areas for added security.
3. **Access Control:** Controlled access to the hostel premises to prevent unauthorized entry.
4. **Emergency Response:** Protocols in place for responding to medical emergencies, fire incidents, or other crises.

**Inclusivity and Gender Sensitivity:** Ramaiah College for Arts, Science, and Commerce is committed to promoting inclusivity and gender sensitivity. We ensure:

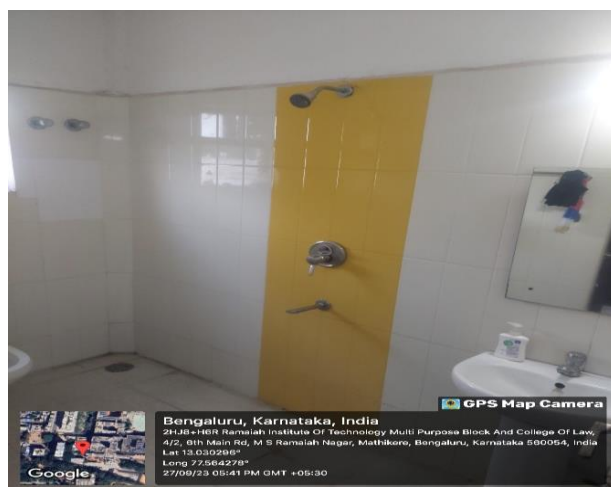
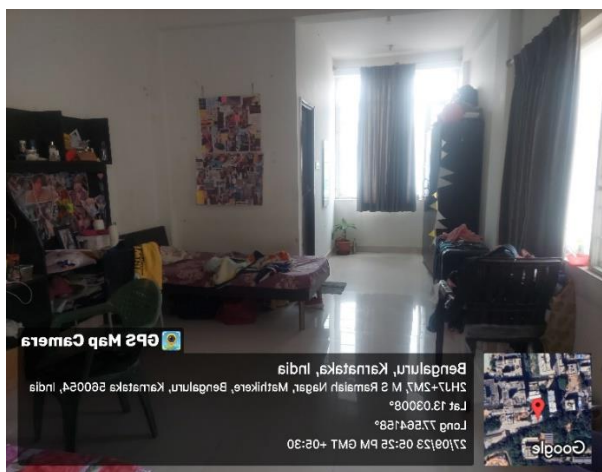
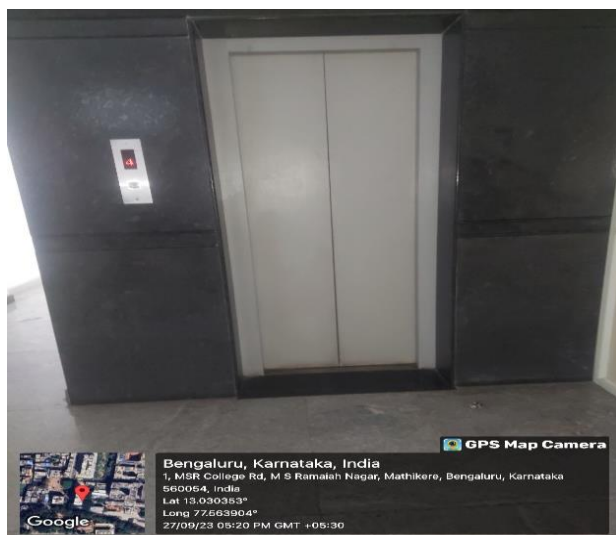
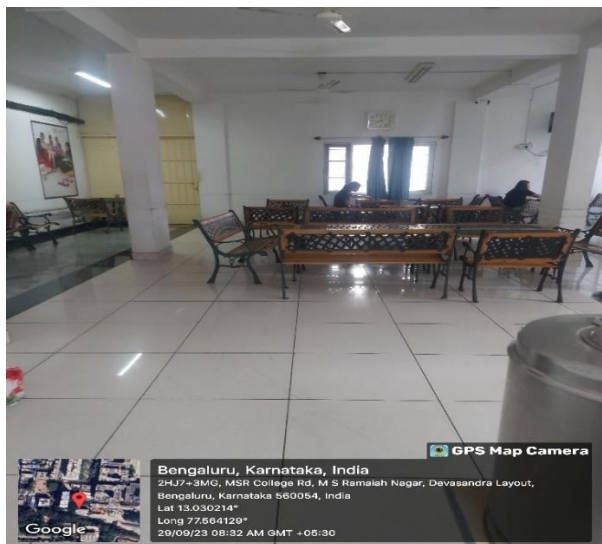
1. **Separate Facilities:** Separate hostels for boys and girls with gender-specific services and security arrangements.
2. **Anti-Harassment Policies:** Strict policies against any form of harassment, with a designated committee to address complaints.
3. **Counselling Services:** Access to counselling services for students' mental health and well-being.

**Student Feedback and Grievance Redressal:** We value student feedback and have established mechanisms for grievance redressal. Regular surveys and open forums allow students to voice their concerns and suggestions, which are then acted upon promptly.

Ramaiah College for Arts, Science, and Commerce is committed to providing top-quality hostel facilities for both boys and girls that meet the stringent standards set by the NAAC. Our focus on infrastructure, amenities, safety, inclusivity, and feedback mechanisms reflects our dedication to enhancing the overall student experience. Our goal is to create a home away from home where students can flourish academically and personally while residing in our hostels.







*Vatshali*  
 Principal,  
 M.S. Ramaiah College of Arts, Science & Commerce  
 MSRIT Post, MSR Nagar  
 Bangalore - 560 054

M S Ramaiah Nagar  
 MSRIT Post  
 Bangalore 560 054

T +91 80 2360 0966/8597  
 +91 80 2360 6905  
 F +91 80 2360 6213

E principal.msrmasc@gmail.com  
 W www.msrmasc.edu.in



## Empowering Women through Crèche Facilities

Ramaiah College of Arts, Science, and Commerce, under the Gokula Education Foundation, is committed to promoting inclusivity, gender equality, and the overall well-being of its employees. As part of this commitment, we are pleased to present a comprehensive report on the establishment and functioning of a crèche facility for women employees, aligning with the guidelines set by the National Assessment and Accreditation Council (NAAC).

**Creche Facility Infrastructure:** The creche facility, managed by the Gokula Education Foundation, has been designed and developed with careful attention to creating a safe, nurturing, and child-friendly environment. The infrastructure includes:

- 1. Secure Premises:** The crèche operates within a secure and accessible area on the college campus, ensuring the safety of the children.
- 2. Child-Friendly Spaces:** The facility is equipped with age-appropriate furniture, play areas, and educational materials to cater to the developmental needs of children.
- 3. Hygiene and Sanitation:** Regular cleaning and maintenance practices are implemented to maintain a clean and hygienic environment for the children.
- 4. Safety Measures:** The facility adheres to safety standards, including fire safety measures, first-aid provisions, and child-proofing of the premises.

**Creche Services:** Our crèche facility offers a range of services that support working women employees in balancing their professional and family responsibilities:

- 1. Qualified Staff:** Trained and caring staff members who are experienced in early childhood education and child care.
- 2. Age-Appropriate Care:** Tailored programs for infants, toddlers, and preschool-aged children, focusing on their developmental milestones.
- 3. Nutrition:** Healthy and nutritious meals and snacks provided to the children, considering any dietary restrictions.
- 4. Flexible Hours:** The creche operates during standard working hours, accommodating the schedules of working mothers.
- 5. Parental Access:** Parents have the option to visit their children during breaks, ensuring a strong bond between parents and their infant

6. **Inclusivity and Support:** Our creche facility is inclusive and welcoming to all women employees, regardless of their roles or positions within the institution. We encourage open communication and provide support for mothers in transitioning back to work after maternity leave.
7. **Feedback and Improvements:** We actively seek feedback from parents and caregivers to continuously improve the quality of services offered at the crèche facility. Regular surveys and interactions with parents allow us to make necessary adjustments and enhancements.

The creche facility under the Gokula Education Foundation for women employees of Ramaiah College of Arts, Science, and Commerce reflects our dedication to fostering a supportive and gender-sensitive work environment. It ensures that working mothers can pursue their careers while knowing that their children are well-cared for in a safe and nurturing environment. Our commitment to inclusivity and employee well-being is aligned with the principles set by the NAAC, and we remain dedicated to maintaining and improving these services to empower women in our institution.



*Vatsalya*  
Principal,  
M.S. Ramaiah College of Arts, Science & Commerce  
MSRIT Post, MSR Nagar  
Bangalore - 560 054





**RAMAIAH**  
College of Arts, Science &  
Commerce

ಎಮ್ ಎಸ್ ರಾಮಯ್ಯ ಕಲಾ, ವಿಜ್ಞಾನ ಮತ್ತು ವಾಣಿಜ್ಯ ಕಾಲೇಜು

**M S Ramaiah College of Arts, Science and Commerce**

Re-accredited 'A' by NAAC, Permanently Affiliated to Bengaluru City University,  
Approved by Government of Karnataka, Approved by AICTE, New Delhi,  
Recognized by UGC under 2f & 12B of UGC act 1956



(National Institutional Ranking Framework, Ministry of Education, Govt of India)  
Ranked 55<sup>th</sup> in NIRF India Ranking by MHRD, New Delhi  
DBT Star College Scheme

## **FOSTERING MENTAL WELL-BEING: PSYCHOLOGICAL COUNSELING BY PROCTORS**

Mental health and well-being are paramount for the holistic development of students in an academic institution. In alignment with the National Assessment and Accreditation Council (NAAC) guidelines, this report explores the provision of psychological counselling services by proctors within the Psychology Department at Ramaiah College of Arts, Science, and Commerce. We emphasize our commitment to nurturing the mental health of our students through professional counselling and support.

**Role of Proctors in Psychological Counselling:** The Psychology Department at our institution recognizes the significance of mental health in students' academic success and overall life satisfaction. Our proctors, who are trained psychologists, play a pivotal role in providing psychological counselling services:

1. **Accessible Support:** Proctors are readily accessible to students, offering a safe and confidential space for discussing personal and emotional concerns.
2. **Mental Health Awareness:** Proctors actively promote mental health awareness across the campus, reducing the stigma associated with seeking help.
3. **Emotional Support:** They provide emotional support to students dealing with academic stress, personal issues, anxiety, depression, and other psychological challenges.
4. **Crisis Intervention:** In cases of crisis or emergencies, proctors are equipped to provide immediate assistance and referrals to appropriate resources.

**Individual Counselling:** Proctors offer one-on-one counselling sessions to students, allowing them to address personal issues in a confidential and empathetic environment. These sessions are tailored to the unique needs of each student, helping them develop coping strategies and resilience.

**Group Counselling and Workshops:** In addition to individual counselling, proctors organize group counselling sessions and workshops on various topics related to mental health, stress management, and personal development. These sessions promote peer support and enhance students' emotional intelligence.

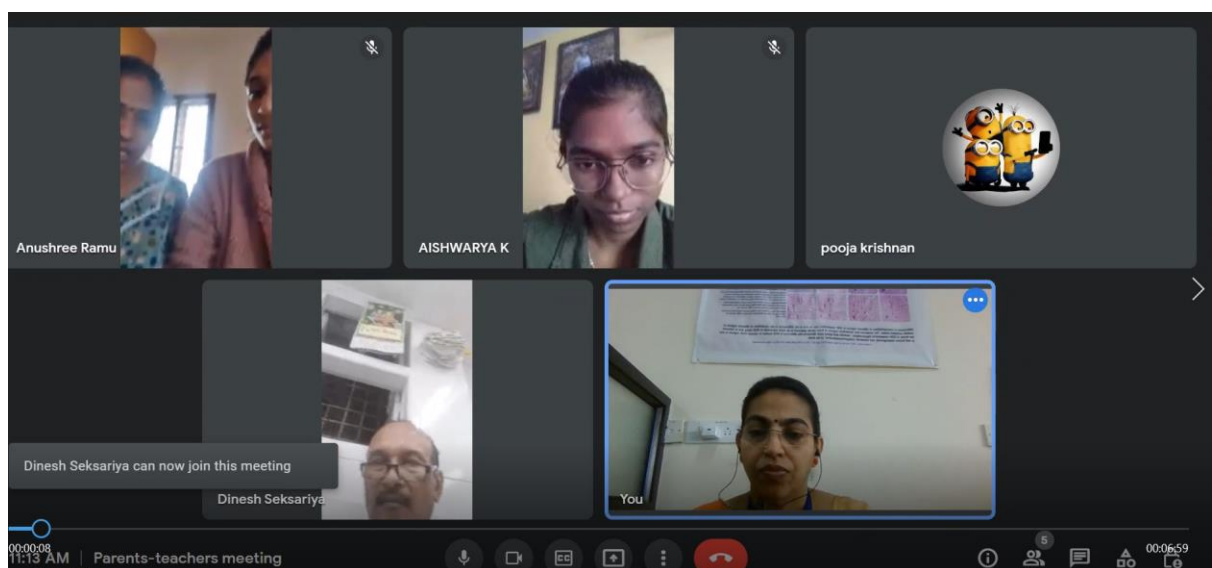
**Psychological Assessment and Evaluation:** Proctors conduct psychological assessments to better understand students' needs and challenges. These assessments aid in developing personalized counselling plans and interventions.

**Collaboration with Other Departments:** The Psychology Department collaborates with other academic departments to address mental health concerns specific to certain disciplines. This interdisciplinary approach ensures that students receive comprehensive support.

**Regular Training and Professional Development:** Proctors undergo regular training and professional development to stay updated on best practices in psychological counselling. This ensures the quality and effectiveness of the services they provide.

**Confidentiality and Ethical Standards:** All counselling sessions are conducted with the utmost confidentiality, adhering to ethical standards and professional codes of conduct. Students' privacy and trust are of paramount importance.

**Feedback and Continuous Improvement:** We actively seek feedback from students and periodically evaluate the effectiveness of our counselling services. This feedback loop allows us to make improvements and enhancements to better meet the evolving needs of our student community. Ramaiah College of Arts, Science, and Commerce is dedicated to nurturing the mental health and well-being of its students. The provision of psychological counselling services by proctors within the Psychology Department reflects our commitment to creating a supportive and empathetic campus environment. We acknowledge the importance of mental health in academic success and personal growth and remain steadfast in our pursuit of excellence in this aspect, in accordance with the NAAC guidelines.



*Vatidevi*  
Principal,  
M.S. Ramaiah College of Arts, Science & Commerce  
MSRIT Post, MSR Nagar  
Bangalore - 560 054